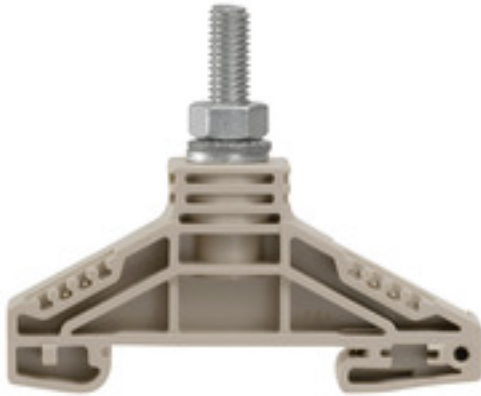


**Bolt-type screw terminals
WF 6**

Weidmüller Interface GmbH & Co. KG
 Klingenbergstraße 16
 D-32758 Detmold
 Germany
 Fon: +49 5231 14-0
 Fax: +49 5231 14-292083
 www.weidmueller.com



Klippon® Connect with stud Technology

Our stud terminals are an established, robust connection alternative for particularly harsh environments. The extensive accessories and quality workmanship ensure high productivity in planning and installation – and sustainable safety in operation..

General ordering data

Type	WF 6
Order No.	1780850000
Version	Bolt-type screw terminals, Feed-through terminal, Rated cross-section: 35 mm ² , Threaded stud connection
GTIN (EAN)	4032248219339
Qty.	25 pc(s).

Bolt-type screw terminals
WF 6

Weidmüller Interface GmbH & Co. KG
 Klingenbergstraße 16
 D-32758 Detmold
 Germany
 Fon: +49 5231 14-0
 Fax: +49 5231 14-292083
 www.weidmueller.com

Technical data**Dimensions and weights**

Width	17.8 mm	Width (inches)	0.701 inch
Height	67 mm	Height (inches)	2.638 inch
Depth	54.5 mm	Depth (inches)	2.146 inch
Net weight	26.494 g		

Temperatures

Continuous operating temp., min.	-50 °C	Continuous operating temp., max.	120 °C
----------------------------------	--------	----------------------------------	--------

Material data

Material	Wemid	Colour	Dark Beige
UL 94 flammability rating	V-0		

System specifications

Version	Single-stud terminals	Tightening torque (clamping screw for copper conductors)	3...6 Nm
End cover plate required	No	Number of levels	1
No. of clamping points per level	1	Levels cross-connected internally	No
PE connection	No	Mounting rail	TS 35

Additional technical data

Explosion-tested version	No	Number of similar terminals	1
Open sides	Open	Type of mounting	Snap-on

CSA rating data

Certificate No. (CSA)	200039-1244019	Current size C (CSA)	150 A
Voltage size C (CSA)	1000 V	Wire cross section max. (CSA)	2 AWG
Wire cross section min. (CSA)	14 AWG		

Conductors for clamping (rated connection)

2 x cable lugs DIN 46 234	2.5...35 mm ²	2 x cable lugs DIN 46 235	6...25 mm ²
Cable lug to DIN 46234	2.5...35 mm ²	Cable lug to DIN 46235	6...25 mm ²
Clamping range, rated connection, max.	35 mm ²	Clamping range, rated connection, min.	2.5 mm ²
Number of connections	1	Stud size for spade connection	M 6
Tightening torque, max.	6 Nm	Tightening torque, min.	3 Nm
Type of connection	Threaded stud connection		

Rating data

Rated cross-section	35 mm ²	Rated voltage	1,000 V
Voltage with epoxy resin partition plate	2,300 V	Rated current	125 A
Current at maximum wires	125 A	Volume resistance according to IEC 60947-7-x	0.26 mΩ
Rated impulse withstand voltage	8 kV	Impulse voltage with epoxy resin partition plate	12 kV
Pollution severity	3		

**Bolt-type screw terminals
WF 6**

Weidmüller Interface GmbH & Co. KG
 Klingenbergstraße 16
 D-32758 Detmold
 Germany
 Fon: +49 5231 14-0
 Fax: +49 5231 14-292083
 www.weidmueller.com

Technical data
UL rating data

Certificate No. (UR)	E60693	Certificate No. (cURus)	E60693
Conductor size Factory wiring max. (UR)	2 AWG	Conductor size Factory wiring min. (UR)	14 AWG
Conductor size Field wiring max. (UR)	2 AWG	Conductor size Field wiring min. (UR)	14 AWG
Current size C (UR)	115 A	Voltage size C (UR)	1000 V

Classifications

ETIM 3.0	EC002020	ETIM 4.0	EC000897
ETIM 5.0	EC000897	ETIM 6.0	EC000897
UNSPSC	30-21-18-01	eClass 6.2	27-14-11-20
eClass 7.1	27-14-11-20	eClass 8.1	27-14-11-20
eClass 9.0	27-14-11-20	eClass 9.1	27-14-11-20

Product information

Descriptive text ordering data	1000 VDC rated voltage tested.
Descriptive text technical data	1000 V UL and CSA for usage groups B and C: can be used with isolating terminal rails and when using WTW-type partitions.
Descriptive text accessories	With WTW...2300 made from epoxy resin, rated current is 2300 V according to DIN EN 50124-1

Approvals

Approvals



ROHS Conform

Downloads

Approval/Certificate/Document of Conformity	DE_PT1004_20160418_848_ISSUE01.pdf
Brochure/Catalogue	CAT 1 TERM 16/17 EN
Engineering Data	EPLAN, WSCAD

Safety note

 Safety notice [Safety Information](#)

Data sheet

**Bolt-type screw terminals
WF 6**

Weidmüller Interface GmbH & Co. KG
Klingenbergstraße 16
D-32758 Detmold
Germany
Fon: +49 5231 14-0
Fax: +49 5231 14-292083
www.weidmueller.com

Drawings

