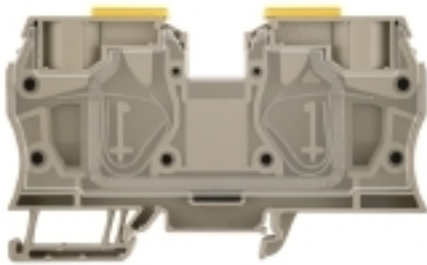


**Z-series
ZDU 35**

Weidmüller Interface GmbH & Co. KG
Klingenbergstraße 16
D-32758 Detmold
Germany
Fon: +49 5231 1429-0
Fax: +49 5231 14292083
www.weidmueller.com

**Spring connection with tension clamp Technology**

Tension clamp technology is a universal contact system for all common conductor connection types. Its fantastic level of flexibility makes the tension clamp a profitable alternative connection.

General ordering data

Type	ZDU 35
Order No.	1739620000
Version	Feed-through terminal, Tension clamp connection, 35 mm ² , 800 V, 125 A, Dark Beige
GTIN (EAN)	4008190957070
Qty.	10 Stück

Z-series ZDU 35

Weidmüller Interface GmbH & Co. KG
 Klingenbergstraße 16
 D-32758 Detmold
 Germany
 Fon: +49 5231 1429-0
 Fax: +49 5231 14292083
 www.weidmueller.com

Technische Daten

Dimensions and weights

Width	16 mm	Width (inches)	0.63 inch
Height	100.5 mm	Height (inches)	3.957 inch
Depth	58.5 mm	Depth (inches)	2.303 inch
Depth including DIN rail	59.5 mm	Net weight	82.009 g

Temperatures

Continuous operating temp., min.	-50 °C	Continuous operating temp., max.	120 °C
----------------------------------	--------	----------------------------------	--------

Material data

Material	Wemid	Colour	Dark Beige
UL 94 flammability rating	V-0		

Rating data IECEx/ATEX

Certificate No. (ATEX)	KEMA00ATEX2 107U	ATEX certificate	KEMA00ATEX2 107U_d.pdf
ATEX certificate	KEMA00ATEX2 107U_e.pdf	Certificate No. (IECEX)	IECEXULD05.0009U
IEC Ex certificate	IECEXULD05.0009U_e.pdf	Max. voltage (ATEX)	690 V
Current (ATEX)	109 A	Wire cross section max. (ATEX)	35 mm ²
Max. voltage (IECEX)	550 V	Current (IECEX)	109 A
Wire cross section max. (IECEX)	35 mm ²	Voltage, cross-connection	CrossConnectionGuide.pdf
Operating temperature range	For operating temperature range see EC Design Test Certificate / IEC Ex-Certificate of Conformity	Marking EN 60079-7	
Ex 2014/34/EU label	II 2 G D		Ex e II

System specifications

Version	Tension-clamp connection, for plug-in cross-connector, closed	End cover plate required	No
Number of levels	1	No. of clamping points per level	2
Number of potentials per tier	1	Levels cross-connected internally	No
PE connection	No	Mounting rail	TS 35

Additional technical data

Explosion-tested version	Yes	Installation advice	Direct mounting
Number of similar terminals	1	Open sides	closed
Type of mounting	Snap-on		

CSA rating data

Certificate No. (CSA)	200039-1152892	Current size B (CSA)	120 A
Current size C (CSA)	120 A	Current size D (CSA)	5 A
Voltage size B (CSA)	600 V	Voltage size C (CSA)	600 V
Voltage size D (CSA)	600 V	Wire cross section max. (CSA)	2 AWG
Wire cross section min. (CSA)	12 AWG		

Z-series ZDU 35

Weidmüller Interface GmbH & Co. KG
 Klingenbergstraße 16
 D-32758 Detmold
 Germany
 Fon: +49 5231 1429-0
 Fax: +49 5231 14292083
 www.weidmueller.com

Technische Daten

Conductors for clamping (rated connection)

Blade size	1.0 x 5.5 mm	Clamping range, rated connection, max.	35 mm ²
Clamping range, rated connection, min.	2.5 mm ²	Connection direction	top
Cross-section for connected conductor, finely stranded with wire-end ferrules and plastic collars DIN 46228/4, rated connection, min.	2.5 mm ²	Gauge to IEC 60947-1	A8
Number of connections	2	Stripping length	25 mm
Type of connection	Tension clamp connection	Wire connection cross section AWG, max.	AWG 2
Wire connection cross section AWG, min.	AWG 12	Wire connection cross section, finely stranded with wire-end ferrules DIN 46228/1, rated connection, max.	35 mm ²
Wire connection cross section, finely stranded with wire-end ferrules DIN 46228/1, rated connection, min.	2.5 mm ²	Wire connection cross section, finely stranded, max.	35 mm ²
Wire connection cross section, solid core max. rated connection	16 mm ²	Wire connection cross section, solid core, min. rated connection	2.5 mm ²
Wire connection cross section, stranded, rated connection, max.	35 mm ²	Wire connection cross section, stranded, rated connection, min.	2.5 mm ²
Wire connection cross-section, finely stranded with wire-end ferrules and plastic collars DIN 46228/4, rated connection, max.	35 mm ²	Wire connection cross-section, finely stranded, min.	2.5 mm ²

Rating data

Rated cross-section	35 mm ²	Rated voltage	800 V
Rated current	125 A	Current at maximum wires	125 A
Standards	IEC 60947-7-1	Volume resistance according to IEC 60947-7-x	0.26 mΩ
Rated impulse withstand voltage	8 kV	Pollution severity	3

UL rating data

Certificate No. (UR)	E60693	Conductor size Factory wiring max. (UR)	2 AWG
Conductor size Factory wiring min. (UR)	12 AWG	Conductor size Field wiring max. (UR)	2 AWG
Conductor size Field wiring min. (UR)	12 AWG	Current size C (UR)	120 A
Voltage size C (UR)	600 V		

Classifications

ETIM 3.0	EC000897	ETIM 4.0	EC000897
ETIM 5.0	EC000897	ETIM 6.0	EC000897
UNSPSC	30-21-18-11	eClass 5.1	27-14-11-20
eClass 6.2	27-14-11-20	eClass 7.1	27-14-11-20
eClass 8.1	27-14-11-20	eClass 9.0	27-14-11-20
eClass 9.1	27-14-11-20		

Product information

Descriptive text ordering data	End plate is integrated. 1000 VDC rated voltage tested.
Descriptive text technical data	Cross-connection of ZDU 10 and ZDU 35 is possible using the ZQV 35-10. Cross-connection of ZDU 16 and ZDU 35 is possible using the ZQV 35-16.

Z-series ZDU 35

Weidmüller Interface GmbH & Co. KG
Klingenbergstraße 16
D-32758 Detmold
Germany
Fon: +49 5231 1429-0
Fax: +49 5231 14292083
www.weidmueller.com

Technische Daten

Approvals

Approvals



ROHS Conform

Downloads

Approval/Certificate/Document of Conformity	CFAT_ZDU_35.pdf DE_PT1101_20160418_1244_ISSUE01.pdf
Brochure/Catalogue	CAT 1 TERM 16/17 EN
Engineering Data	EPLAN, WSCAD, Zuken E3.S

Safety note

Safety notice [Safety Information](#)

Datenblatt

Z-series
ZDU 35

Weidmüller Interface GmbH & Co. KG
Klingenbergstraße 16
D-32758 Detmold
Germany
Fon: +49 5231 1429-0
Fax: +49 5231 14292083
www.weidmueller.com

Zeichnungen

