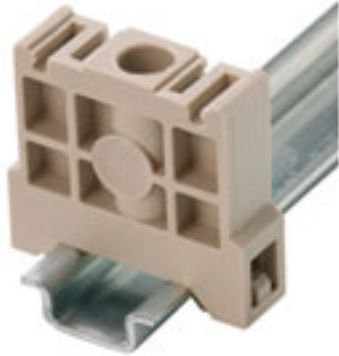


**Accessories**  
**EW 15/2**

**Weidmüller Interface GmbH & Co. KG**  
Klingenbergstraße 16  
D-32758 Detmold  
Germany  
Fon: +49 5231 1429-0  
Fax: +49 5231 14292083  
www.weidmueller.com

**Klippon® Connect with clamping yoke Technology**

The high reliability and variety of designs of the terminal blocks with clamping yoke connections make planning easier and optimises operational safety. Klippon® Connect provides a proven response to a range of different requirements.

**General ordering data**

Type	EW 15/2
Order No.	<a href="#">1071900000</a>
Version	Accessories, End bracket
GTIN (EAN)	4008190462949
Qty.	50 pc(s).

**Accessories  
EW 15/2**

**Weidmüller Interface GmbH & Co. KG**  
 Klingenbergstraße 16  
 D-32758 Detmold  
 Germany  
 Fon: +49 5231 1429-0  
 Fax: +49 5231 14292083  
 www.weidmueller.com

**Technical data**
**Dimensions and weights**

Width	8 mm	Width (inches)	0.315 inch
Height	27 mm	Height (inches)	1.063 inch
Depth	25 mm	Depth (inches)	0.984 inch
Net weight	5.16 g		

**Temperatures**

Continuous operating temp., min.	-50 °C	Continuous operating temp., max.	100 °C
----------------------------------	--------	----------------------------------	--------

**Material data**

Material	Plastic	Colour	Dark Beige
UL 94 flammability rating	HB		

**System specifications**

Version	For the terminals	Mounting rail	TS 15
---------	-------------------	---------------	-------

**Additional technical data**

Interlock	for screw fixing	Type of mounting	Direct mounting
-----------	------------------	------------------	-----------------

**Conductors for clamping (rated connection)**

Blade size	0.6 x 3.5 mm
------------	--------------

**Dimensions**

TS 15 offset	13.5 mm
--------------	---------

**Classifications**

ETIM 3.0	EC001041	ETIM 4.0	EC001041
ETIM 5.0	EC001041	ETIM 6.0	EC001041
UNSPSC	30-21-18-01	eClass 5.1	27-08-10-03
eClass 6.2	27-08-10-03	eClass 7.1	27-08-10-03
eClass 8.1	27-14-11-35	eClass 9.0	27-14-11-35
eClass 9.1	27-14-11-35		

**Approvals**

ROHS	Conform
------	---------

**Downloads**

Brochure/Catalogue	<a href="#">CAT 1 TERM 16/17 EN</a>
Engineering Data	<a href="#">EPLAN, WSCAD</a>
Engineering Data	<a href="#">1071900000_22353_EW_15-2_STP.stp</a> <a href="#">22353_EW_15-2_DXF.dxf</a>