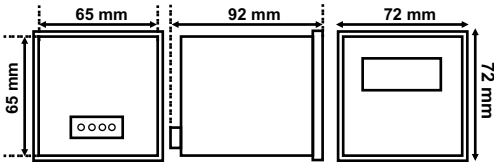
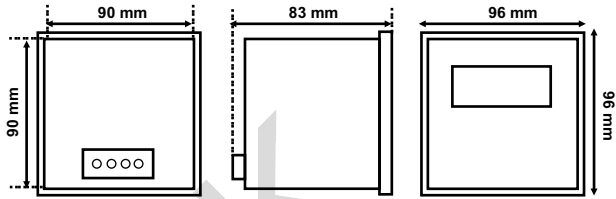


**Dimensions**

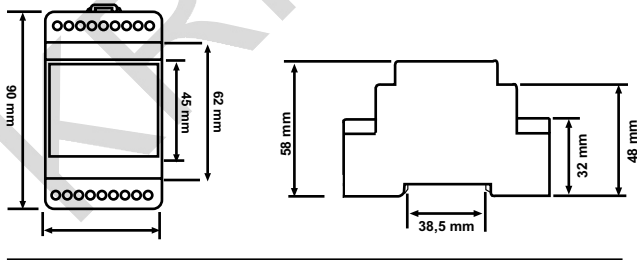
**Figure-1**



**Figure-2**



**Figure-3**



**True RMS**

**ELECTRONIC PANEL AMPERMETERS**

**KDA 72  
KDA 96  
KDA - R**

**KDA 72-30  
KDA 96-30**



**User Guide**

UG-06/REV 01

**General Specifications**

**KDA 72 / KDA 96 / KDA - R**

Measures very accurately, the current value of the any line (AC+DC) in true RMS. Any line can be measured between 0...9999. When the reading exceeds 9999A, it shows Err fault message.

**KDA 72-30 / KDA 96-30**

Measures very accurately, the current value of the any line (AC+DC) in true RMS. KDA 72-30 can measure any line between 0...30 A directly

**CT Ratio Adjustment:**

By pressing the button on front panel, CT ratio can be adjust. CT Ratio should be.../5 A. For saving adjusted value, just waiting for 5 seconds is enough

**Technical Specifications**

Code	Display	Measurement Range	Dimensions	Weight (kg)
KDA 72	4 digit, red, 10mm	0...9999A	Figure-1	0,23
KDA 96	4 digit, red, 14mm	0...9999A	Figure-2	0,28
KDA 72-30	3 digit, red, 10mm	0...30A	Figure-1	0,23
KDA 96-30	3 digit, red, 14mm	0...30A	Figure-2	0,28
KDA - R	4 digit, red, 10mm	0...9999A	Figure-3	0,19

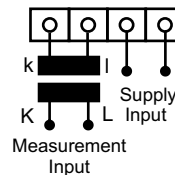
- Accuracy : ± (%1+1)
- Class : 1
- Supply Voltage : 220 Vac ± %20, 50 / 60 Hz
- Power Consumption : < 3 VA
- Ambient Temperature : -5 °C...+55 °C

**CT Ratios**

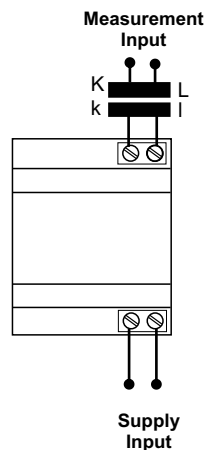
1, 2, 4, 5, 6, 8, 10, 12, 15, 20, 25, 30, 40, 50, 60, 80, 100, 120, 150, 160, 200, 250, 300, 320, 360, 400, 500, 600, 700, 800, 900, 1000, 1200, 1400, 1600, 1800, 2000

**Connection Schemes**

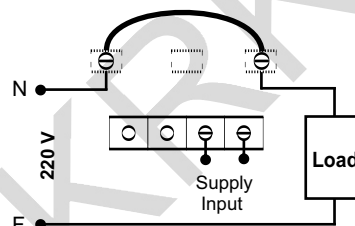
**KDA 72 / KDA 96**



**KDA - R**



**KDA 72-30 / KDA 96-30**



**Note:** Device will be damaged when voltage is applied to the current entry or current transformer is selected smaller than needed(as over current will be applied to the device).