

## Wall mounted socket

Part no. 5959A

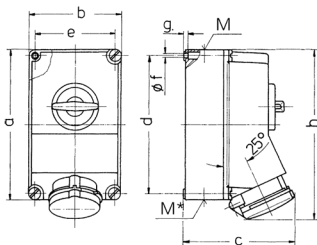


- screw terminals
- X-CONTACT®
- switched
- mechanical DUO-interlock sockets can be padlocked

## Technical specifications

|                       |                 |
|-----------------------|-----------------|
| Ampere                | 63 A            |
| Poles                 | 5 p             |
| Voltage               | 400 V           |
| Clock position        | 6 h             |
| Hertz                 | 50-60 Hz        |
| Connection technology | Screw terminals |
| Contact               | X-CONTACT®      |
| Protection type       | IP 44           |
| Enclosure material    | Plastic         |
| Weight                | 2480 g          |

## Drawing



| Drawing<br>1 MB 234  | Amp.<br>Poles         | 63   |      |      |
|--|-----------------------|------|------|------|
|  |                       | 3    | 4    | 5    |
| Dim. in mm   | a                     | 264  | 264  | 264  |
|  | b                     | 163  | 163  | 163  |
|  | c                     | 192  | 192  | 192  |
|  | d                     | 240  | 240  | 240  |
|  | e                     | 140  | 140  | 140  |
|  | f                     | 8.1  | 8.1  | 8.1  |
|  | g                     | 8    | 8    | 8    |
|  | h                     | 300  | 300  | 300  |
|  | M                     | 40   | 40   | 40   |
|  | M*                    | 2x40 | 2x40 | 2x40 |
|  | Max. cable diam. (mm) | 27   | 27   | 27   |
| Terminal for cond. cross<br>section (mm <sup>2</sup> ) min.-max. |                       | 6    | 6    | 6    |
|  |                       | -25  | -25  | -25  |