

Panel mounted socket

Part no. 1124A

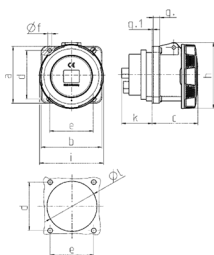


- screw terminals
- X-CONTACT®
- straight
- products with pilot contact on request

Technical specifications

| | |
|---------------------------|------------------|
| Ampere | 63 A |
| Poles | 4 p |
| Voltage | 400 V |
| Clock position | 6 h |
| Hertz | 50-60 Hz |
| Connection technology | Screw terminals |
| Contact | X-CONTACT® |
| Protection type | IP 67 |
| Flange | 107x100 mm |
| Fixing hole | 85x77 mm |
| Weight | 604 g |
| Declaration of Conformity | DE, VDE, CN, CQC |

Drawing



| Drawing 1 MB 212/258 | Amp. Poles | 63 | | | 125 | |
|---|---------------|-----|-----|-----|-----|-----|
| | | 3 | 4 | 5 | 4 | 5 |
| Dim. in mm | a | 107 | 107 | 107 | 130 | 130 |
| | b | 100 | 100 | 100 | 130 | 130 |
| | c | 81 | 81 | 81 | 119 | 119 |
| | d | 85 | 85 | 85 | 104 | 104 |
| | e | 77 | 77 | 77 | 104 | 104 |
| | f | 6 | 6 | 6 | 6.5 | 6.5 |
| | g | 12 | 12 | 12 | 18 | 18 |
| | g.1 | 2 | 2 | 2 | 2 | 2 |
| | h | 117 | 117 | 117 | 129 | 129 |
| | i | 113 | 113 | 113 | 126 | 126 |
| | k | 55 | 55 | 55 | 43 | 43 |
| | l | 88 | 88 | 88 | 95 | 95 |
| Terminal for cond. cross section (mm ²) min.-max. | | 6 | 6 | 6 | 25 | 25 |
| | | -25 | -25 | -25 | -70 | -70 |