

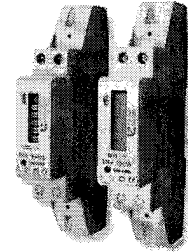
36007



- HOME
  - COMPANY PROFILE
  - CAREER
  - CONTACT
  - E-SHOP
- SINGLE-PHASE  
ELECTRICITY METERS
  - THREE-PHASE  
ELECTRICITY METERS
  - AUTOMATED DATA  
COLLECTION
  - ELECTRICITY METER  
TEST EQUIPMENT

## DDS-1Y-M/L for DIN rail, for active energy measuring, 1-module case

Electricity meters of series DDS-1Y-M and DDS-1Y-L are simple and precise meters for active energy measurement. They are designed for secondary measurements of various appliances, offices and premises.



### Properties

- Easy assembly,
- Simple connection and operation,
- High accuracy.

### Technical data

Precision class	1
Reference voltage [V]	230
Current range [A]	5 (45)
Reference frequency [Hz]	50
Connection	direct
Data display	LCD – version L; mechanical register - version M
Number of displayed digits	5+2 – version L; 5+1 – version M
Starting current [A]	≤ 0,004 I <sub>n</sub>
Power consumption	≤ 0,4 W; 8 VA
Meter constant [imp/kWh]	1000
Impulse constant output SO [imp/kWh]	1000
Standard	EN61010-1(LVD directive), EN61326-1(EMC directive)
EMC environment*	protected (level 2)
Weight [g]	83

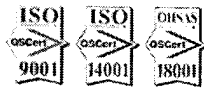
Download

- [1\\_20\\_1\\_DDS\\_1Y\\_M\\_L\\_slo.pdf](#)
- [1\\_20\\_1\\_DDS\\_1Y\\_M\\_L\\_eng.pdf](#)
- [1\\_20\\_1\\_DDS\\_1Y\\_M\\_L\\_rus.pdf](#)
- [1\\_20\\_1\\_DDS\\_1Y\\_M\\_L\\_pol.pdf](#)

- \* According to EN61000-4-4
- partial suppression of EFT/B (Electrical fast transient / Burst) in the power supply (1 kV) and control circuit (0,5 kV), which are switched only by relays (no contactors)
  - physical separation of unshielded power supply and communication cables.

- According to EN61000-4-5
- cables are well separated, even at short runs. Surge voltages may not exceed 1 kV

### CONTACT



Applied Meters, a.s.  
 Budovateľská 50  
 080 01 Prešov  
 Slovak Republic  
 Tel.: +421 51 758 11 69  
 Fax: +421 51 758 11 68

- HOME
- COMPANY PROFILE
- CAREER
- CONTACT
- E-SHOP

Copyright © Applied Meters 2017