

T-30F/32/32Pro/33/34

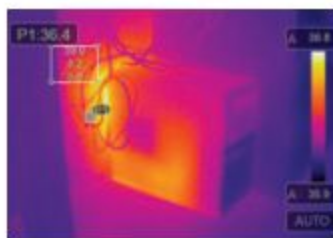
Portable thermal camera

CEM

The portable thermal camera series with are easy to use, USB rechargeable. They can quickly scan the temperature of electrical equipment, machinery, and other assets. They provide high and low temperature points, crosshairs to pinpoint specific temperatures, and options for temperature alarms.



EMC
EN: 61326-1
EN: 61010-1



Model T-30F

Specifications

Mode	T-30F	T-32	T-32 Pro	T-33	T-34
IR resolution	80x30	120x90	120x90	160x120	256x192
Image frequency	9Hz	25Hz	25Hz	25Hz	25Hz
Pixel size	17µm	17µm	17µm	17µm	17µm
Field of view (FOV) / Minimum focus distance	34°x23°/0.5m	50°x38°/0.5m	50°x38°/0.5m	34°x23°/0.5m	80°x60°/0.5m
Object temperature range	-20 to 150°C (-4 to 302°F)	-20 to 150°C (-4 to 302°F)	-20 to 150°C (-4 to 302°F)	-20 to 150°C (-4 to 302°F)	-20 to 400°C (-4 to 752°F)
	0 to 400°C 32 to 752°F	0 to 400°C 32 to 752°F	0 to 550°C 32 to 1022°F	0 to 550°C 32 to 1022°F	0 to 550°C 32 to 1022°F
Built-in digital camera			2M	2M	2M
Display	2.8" 320x240 TFT screen				
Color palettes	Iron, Rainbow, Grey, Grey Inverted, Brown, Blue-red, hot-cold, Feather, Above alarm, Below alarm, Zone alarm,				
Spot	Center Spot				
Automatic hot/cold detection	Auto hot or cold markers				
Storage media	4GB EMMC				
Image storage format	Standard JPEG, or HIR files including measurement data, on memory card >6000 pictures				
Interfaces	USB Type-C				
Battery	Li-ion battery, 4 hours operating time				



320x240
2.8" TFT screen



2M visible light digital
camera



400°C
temperature
range



IP54

Size(HxWxD): 90X85X25mm Weight: 115g

Accessories: USB cable, Gift box.