

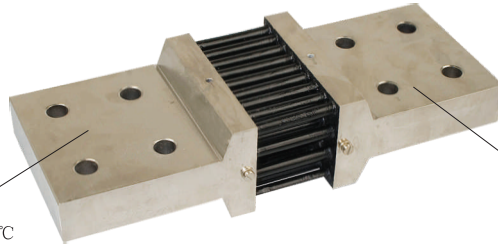
### ● SELECTION OF DC SHUNT

Shunt provide an accurate DC millivolt signal to drive ammeter indicators, overload protection and control devices, especially for higher current. The shunt supply voltage drop proportional to DC current which is measured and indicated by moving coil meter with dial calibrated in amps.

SE Series

### ● FEATURE

Input Current: 1A-6000A  
Voltage drop: 50mV; 60mV; 75mV.  
Accuracy index: Class 0.5  
Rating temperature range: 25°C ~ +65°C



Material: made from brass extrusions, high quality manganin resistance wire. Excellent stability  
Extremely low temperature coefficient



| SE-1~125



| SE-150~250

Model	Shunt Current(A)	Voltage Drop	Accuracy Class	Case Qty.(Pcs)	Item Code
SE-1	1	×60mV*	0.5	64	190001
SE-1.5	1.5	×60mV*	0.5	64	190015
SE-2.5	2.5	×60mV*	0.5	64	190025
SE-4	4	×60mV*	0.5	64	190004
SE-5	5	×60mV*	0.5	64	190005
SE-6	6	×60mV*	0.5	64	190006
SE-10	10	×60mV*	0.5	64	190010
SE-15	15	×60mV*	0.5	64	190115
SE-20	20	×60mV*	0.5	64	190020
SE-25	25	×60mV*	0.5	64	190225
SE-30	30	×60mV*	0.5	64	190030
SE-40	40	×60mV*	0.5	64	190040
SE-50	50	×60mV*	0.5	64	190050
SE-60	60	×60mV*	0.5	64	190060
SE-80	80	×60mV*	0.5	64	190080
SE-100	100	×60mV*	0.5	64	190100
SE-125	125	×60mV*	0.5	64	190125

\* ×50mV or ×75mV upon request.

SE-150	150	×60mV*	0.5	64	190150
SE-200	200	×60mV*	0.5	64	190200

\* ×50mV or ×75mV upon request.