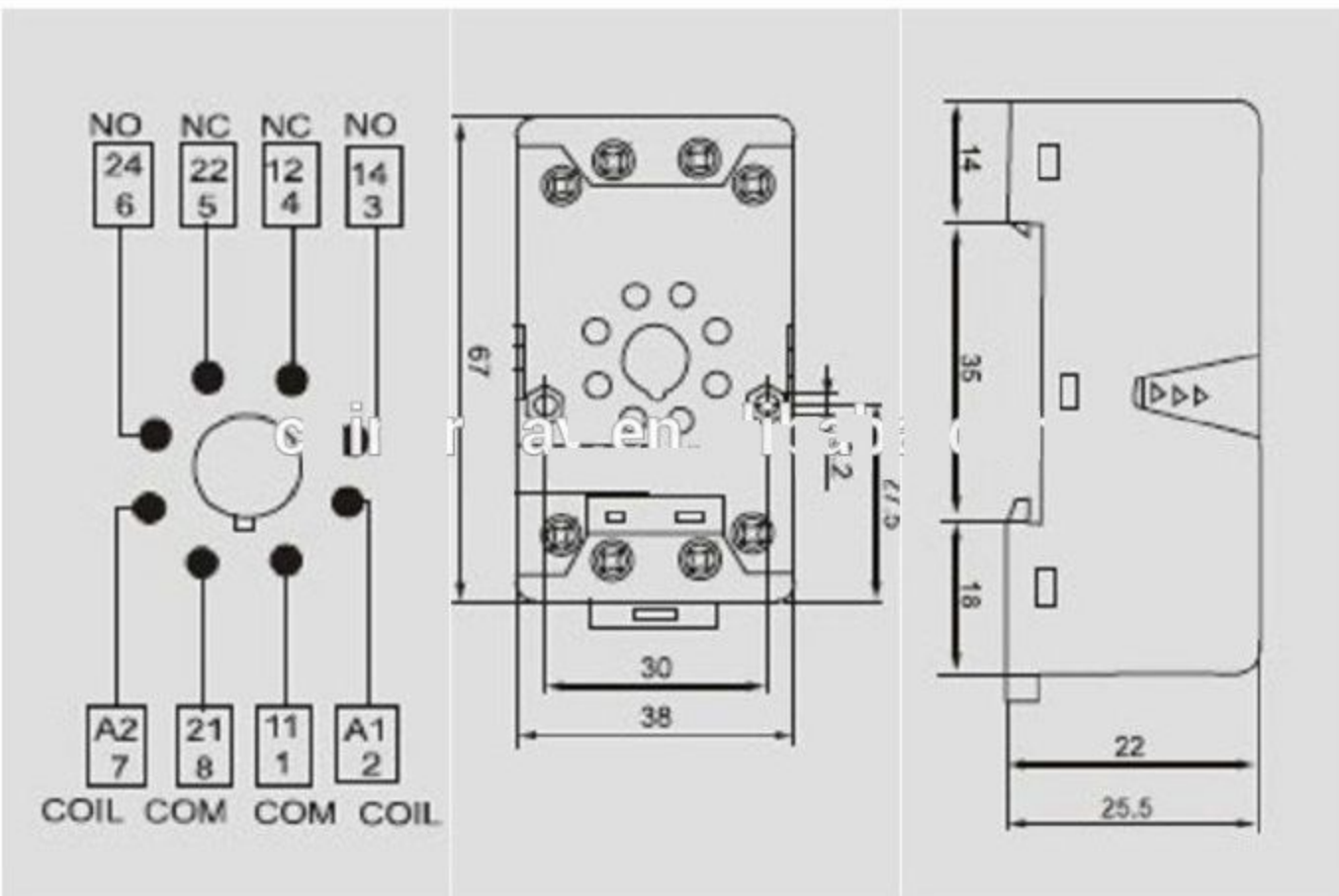


Mached relay			
Socket model	Relay model	Metal Clip	Module
90.20	MK2P MK2PK 60.2 70.2 AS80.2 90.2 JQX-10 2Z	K-53	AMC



Quick Details

Place of Origin: Zhejiang, China (Mainland)

Type: relay socket

Rated Current: 10a

feature: socket outlets

relay model2: JQX10-2Z

relay model5: AS2P-U

Brand Name: Asiaon

Grounding: Non-Grounding

Application: Industrial

color: blue

relay model3: 60.2 70.2 90.2

certification: ROHS,ISO9000,TS16949

Model Number: 90.20

Rated Voltage: 300vac

name: Asiaon 90.20 8 pin 60.2 70.2 90.2 relay socket outlets

relay model1: MK2P MK2PK

relay model4: AS80.2

lead time: 15days

Specification

Rated load	Current/Voltage	AVAC	10/300
Dielectric Strength	Coil/Contact	V/S	4000
	Between contact	V/S	2500
External connection wire		AWG/mm2	20-14/0.5-2.5
Screw torque		Nm	0.8
Terminal protection degree			IP20